

105 Colony Line Trail

Dale, TX
Caldwell County

18.30 AC

*Call Jay Tinney at (512) 656-8024
or Chad Edwards at (512) 350-3532
with any questions or to set up a showing
at your convenience.*



Texas Ranch Sales
South Texas • Hill Country • Central Texas

Property Description

- Electricity on site – 200 AMP service
- Private water well on site
- Both private road and county road access
- Abundance of towering hardwood trees
- Driving and hiking trails throughout property
- Gated entryway with remote access
- Peaceful and private setting at the end of a county road

~ 15 min. from Lockhart, TX

~ 45 min. from Austin, TX

~ 1.5 hrs. from San Antonio, TX



















































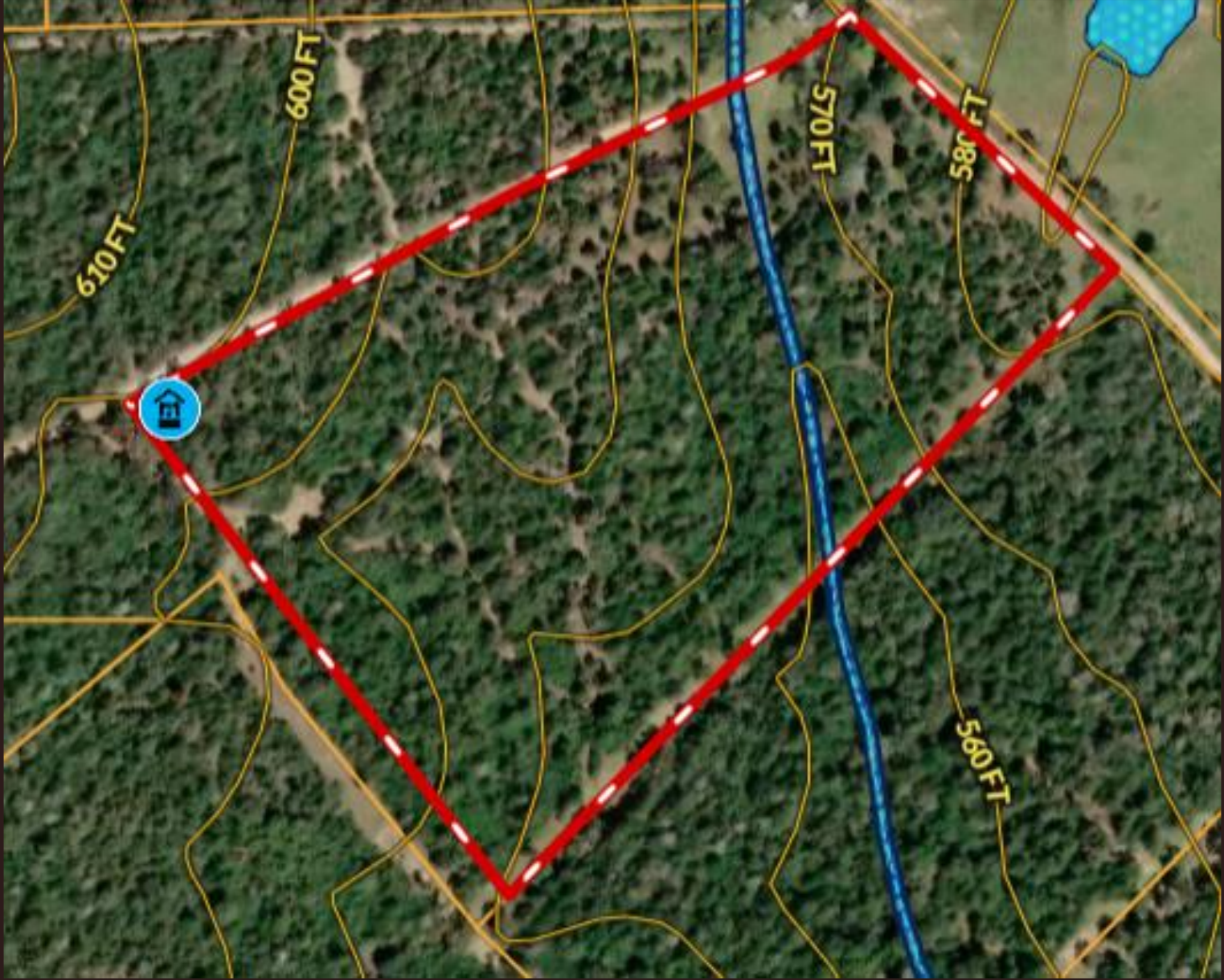




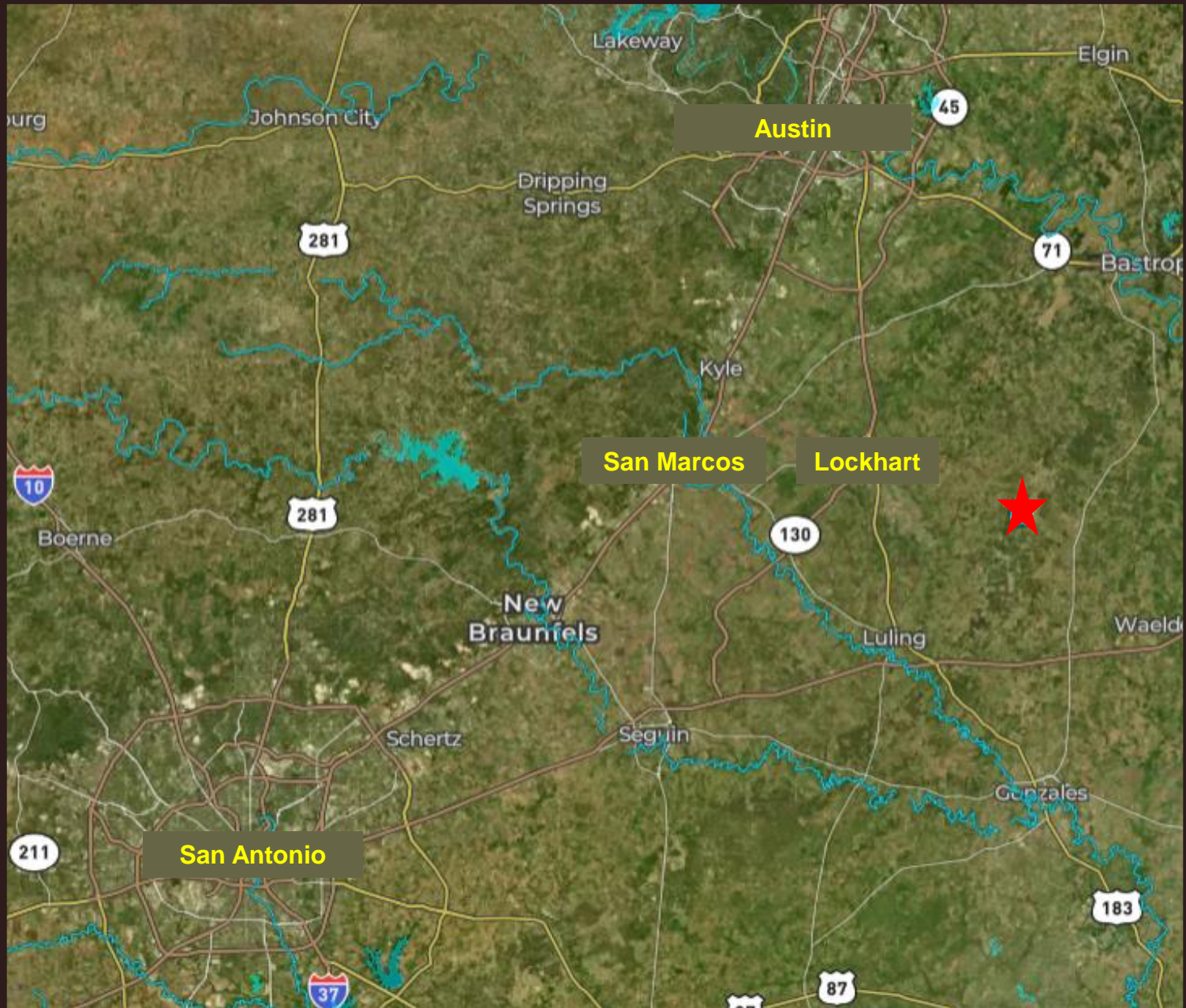












105 Colony Line Trail

A BEAUTIFUL RANCHETTE WITHIN THE RANCHES OF COLONY LINE TRAIL DEVELOPMENT. The entrance into this ranchette greets you with a custom iron, electric gate and private drive. Huge towering shade trees welcome you as you drive into the 18.30 acres. There are many choices of great homesite locations tucked away amongst the native landscape. There is not a timeframe to build so you have plenty of time to make up your mind where you may want to do so. This ranchette has great access, privacy and gorgeous landscape.

Absolutely the best-looking rural country estates in South Texas!

Click the following video link
to view the stunning ranch:

[105 Colony Line Trail Video](#)