

# Ellis Ranch Subdivision

Goliad, TX  
Goliad County

**5AC - 10AC Tracts**

*Call Jay Tinney at (512) 656-8024  
or Chad Edwards at (512) 350-3532  
with any questions or to set up a showing  
at your convenience.*



Texas Ranch Sales  
South Texas • Hill Country • Central Texas

# Property Description

- 5 Acres to 10.9 Acres
- Less than an hour from the Texas Coast
- Huge towering Oak trees
- Private, rural estate setting
- Beautifully designed custom gated entrance
- Electricity on site - 200 AMP
- Expansive 180 degree views from multiple tracts
- Lightly restricted - No manufactured homes, site built only, 1200 Sq Ft minimum and barndominium friendly!

~ 45 min. from Victoria, TX  
~ 1 hr. from Corpus Christi, TX  
~ 2 hrs. from San Antonio, TX  
~ 2 hrs. from Houston, TX



ELLIS RANCH

1776 FM 1351























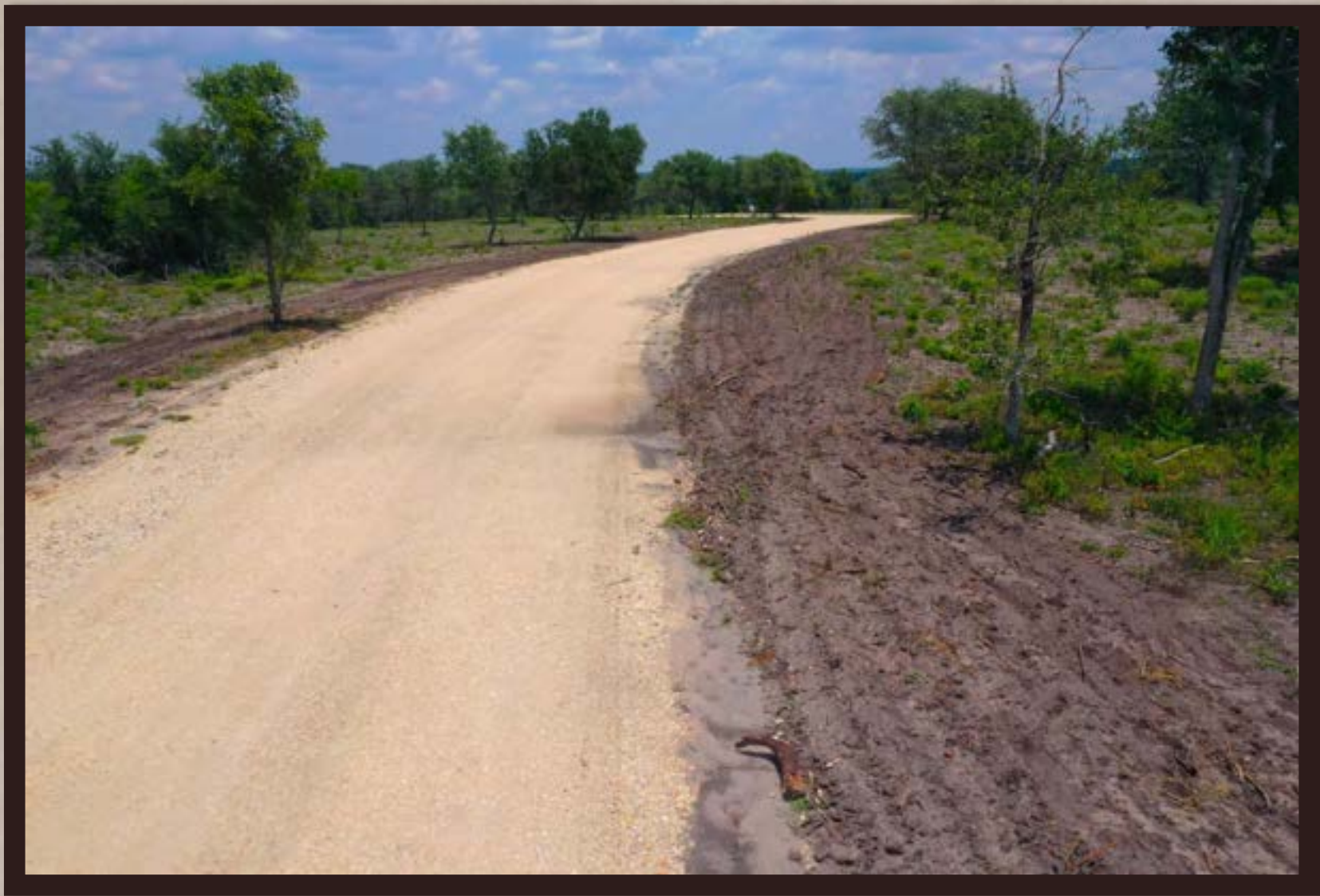






















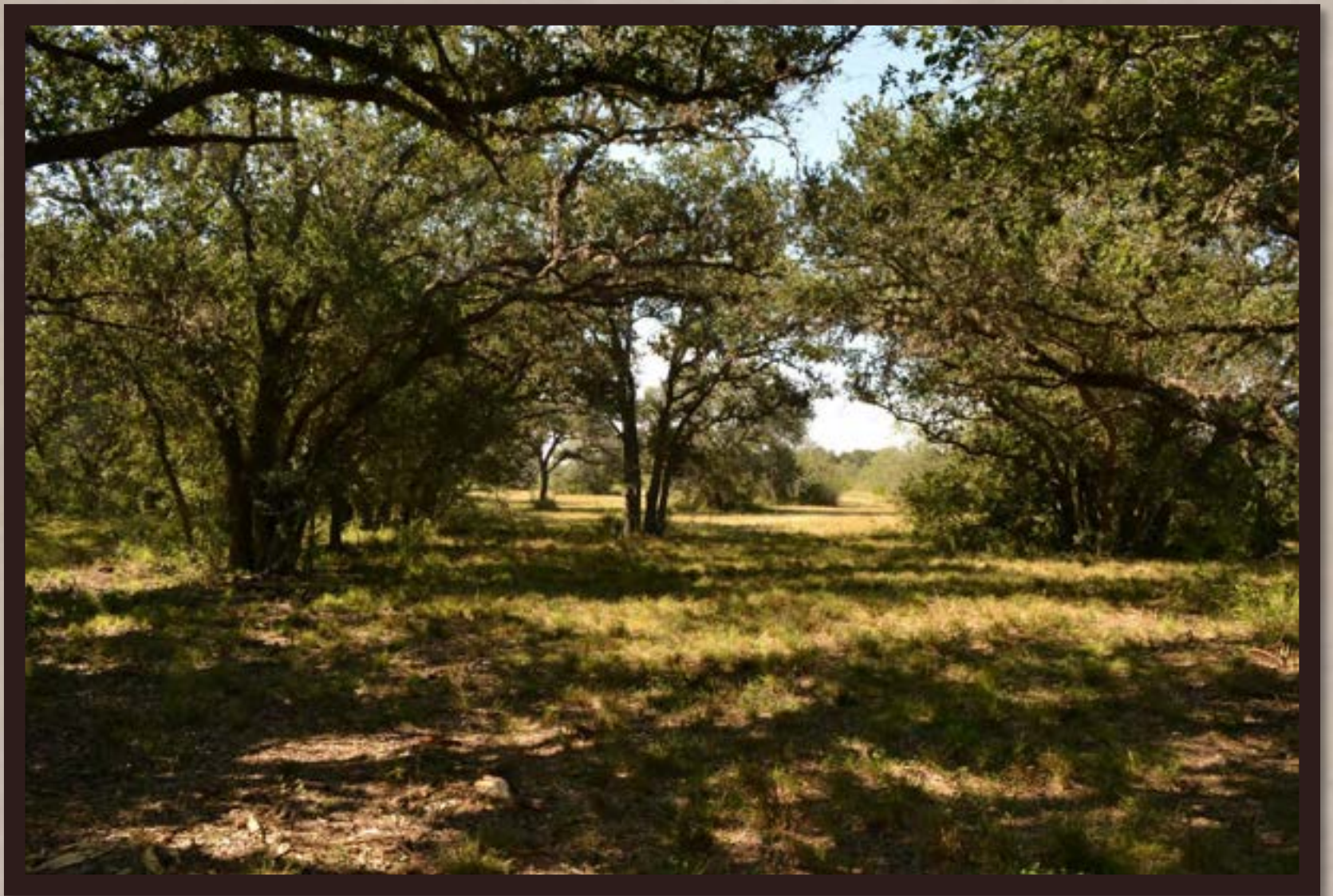






















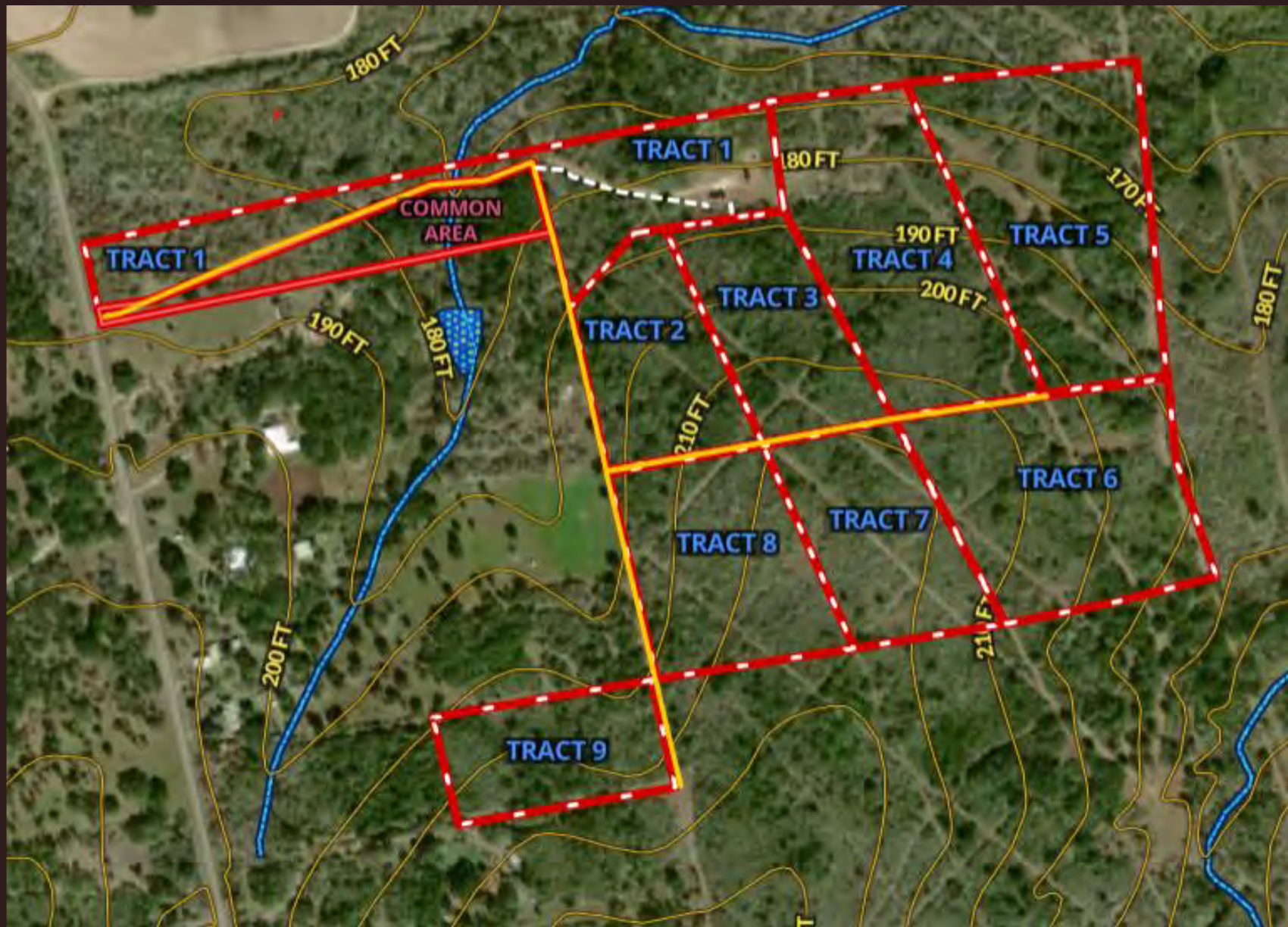


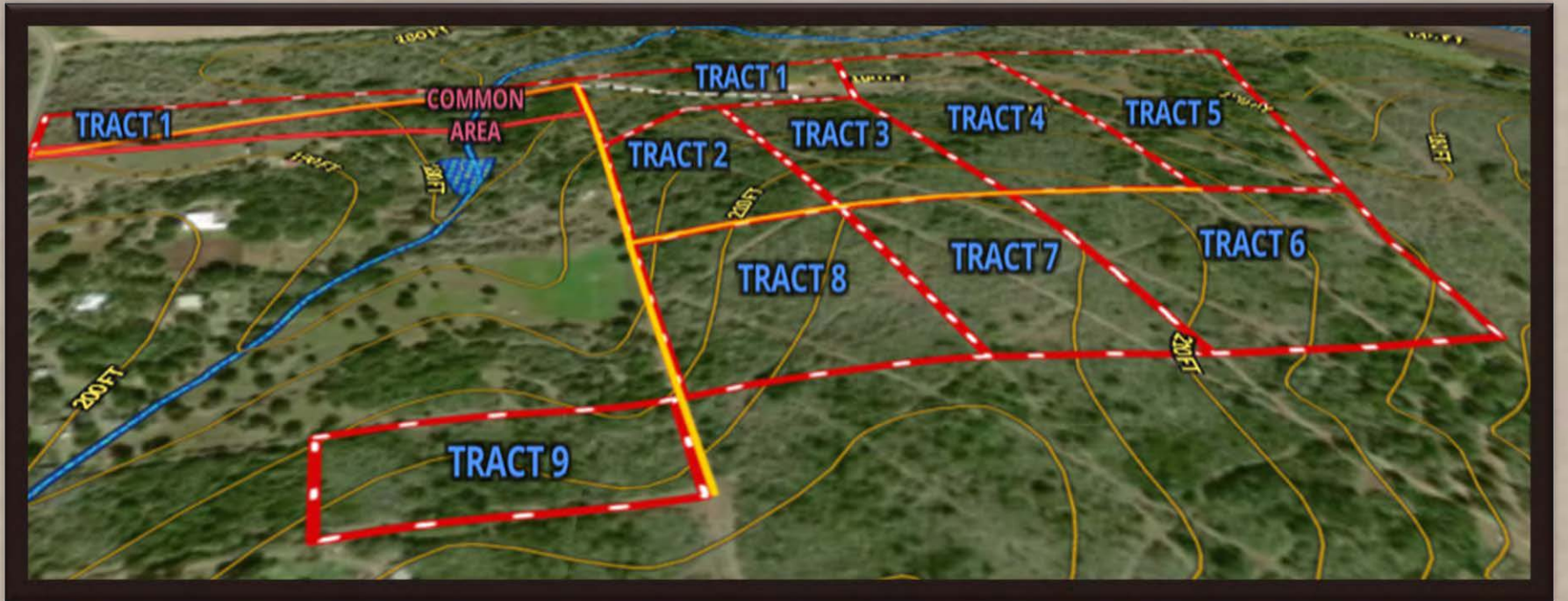


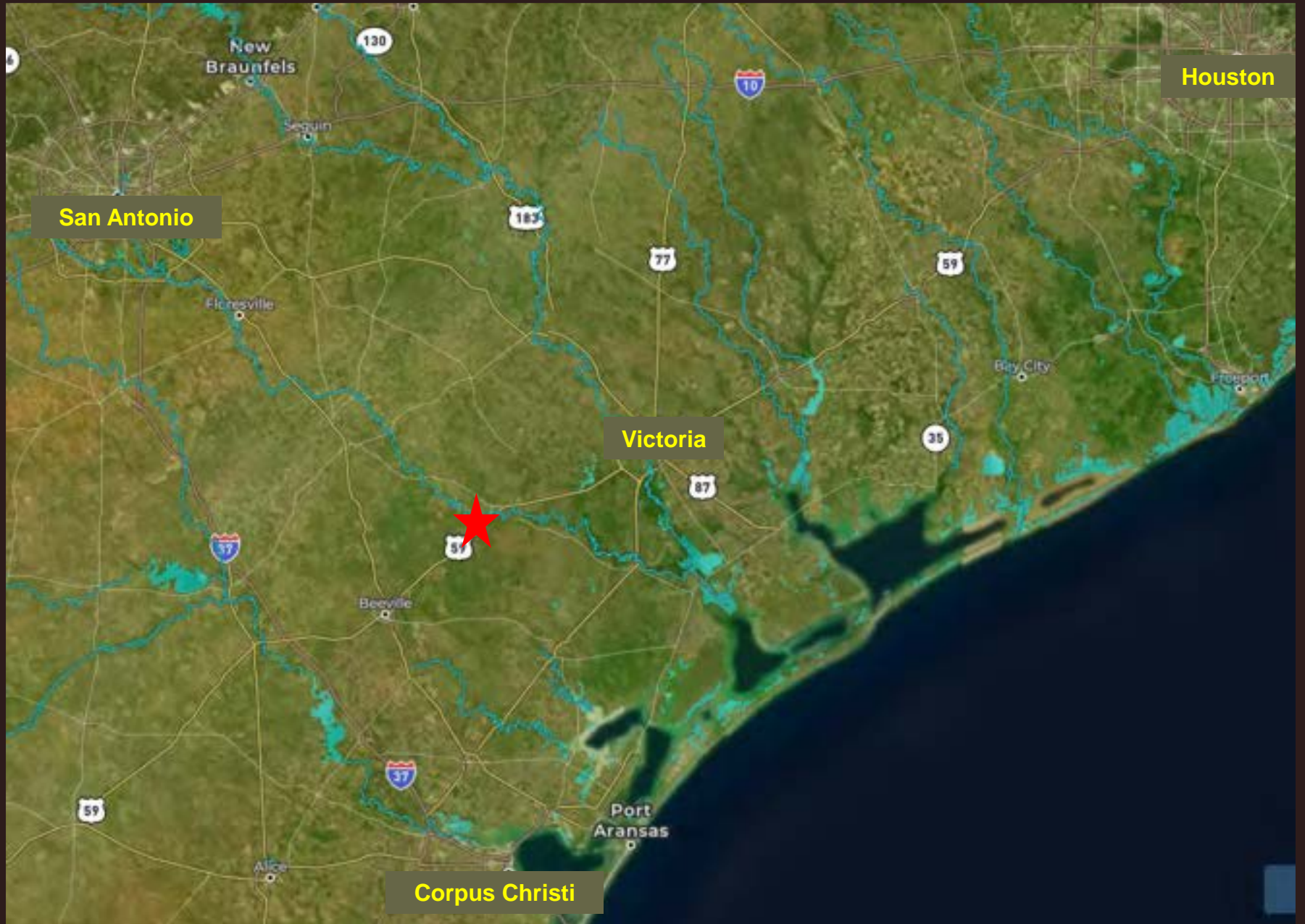












San Antonio

Victoria

Corpus Christi

Houston



# Ellis Ranch Subdivision

Ellis Ranch is an exclusive gated community with private road access to each tract, electricity on site, 180° views from multiple tracts, blanketed in majestic Live Oak trees, towering Elm Trees as well as many other large mature hardwoods. Loaded with wildlife, wildlife habitat, rolling terrain and spacious open pastureland. Beautiful dark star lite nights and breath-taking views of the countryside.

Ellis Ranch is 7.5 miles Southwest of Goliad, TX (population: 1908). A short drive into town for groceries, restaurants, gas, hardware stores, schools, etc. Ellis Ranch is made up of twenty oversized rural country estates that range from 5.18 acres up to 10.98 acres in size. It's private road access is maintained for all it's owners and their guests. Restrictions include but are not limited to: Single family residential use only, two dwellings per tract, minimum 1200 sq ft for the first dwelling and 800 sq ft for the second. Maximum building height allowed is two stories (roof top decks are allowed). No manufactured homes, on site built only...Barndominium friendly!

*Absolutely the best-looking rural country estates in South Texas!*

Click the following video link  
to view the stunning ranch:

[Ellis Ranch Video](#)