

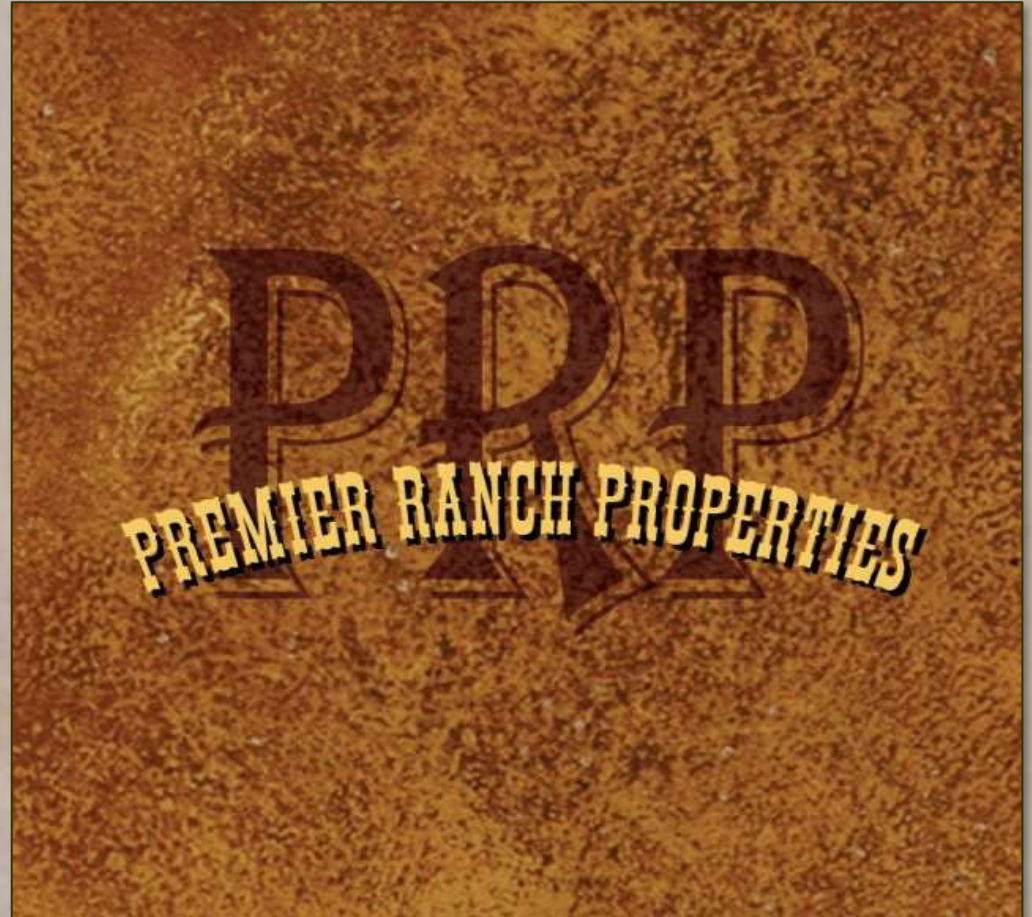
PremierRanchProperties.com
South Texas • Hill Country • Central Texas

The Ranches of Colony Line Trail

McMahan, TX
Caldwell County

15-21 ACRE TRACTS

*Call Chad Edwards (512) 350-3532
with any questions or to set up a showing
at your convenience.*



TEXAS RANCH SALES

PROPERTY DESCRIPTION

- Bluebonnet electricity on site.
 - Private water wells on site.
 - Surface water features on select properties.
 - Great wildlife habitat and hunting permitted.
 - ~15 Minutes from Lockhart, TX
 - ~60 Minutes from Austin, TX
 - ~60 Minutes from San Antonio, TX
-
- *Tract #1* – 18.301 acres @ \$325,000
 - *Tract #2* – 18.634 acres @ \$329,000
 - *Tract #3* – 21.178 acres @ \$385,000
 - *Tract #4* – 20.863 acres @ \$379,000
 - *Tract #5* – 18.386 acres @ \$329,000
 - *Tract #6* – 21.068 acres @ \$379,000
 - *Tract #7* – 15.265 acres @ \$299,000
 - *Tract #8* – 15.003 acres @ \$309,000































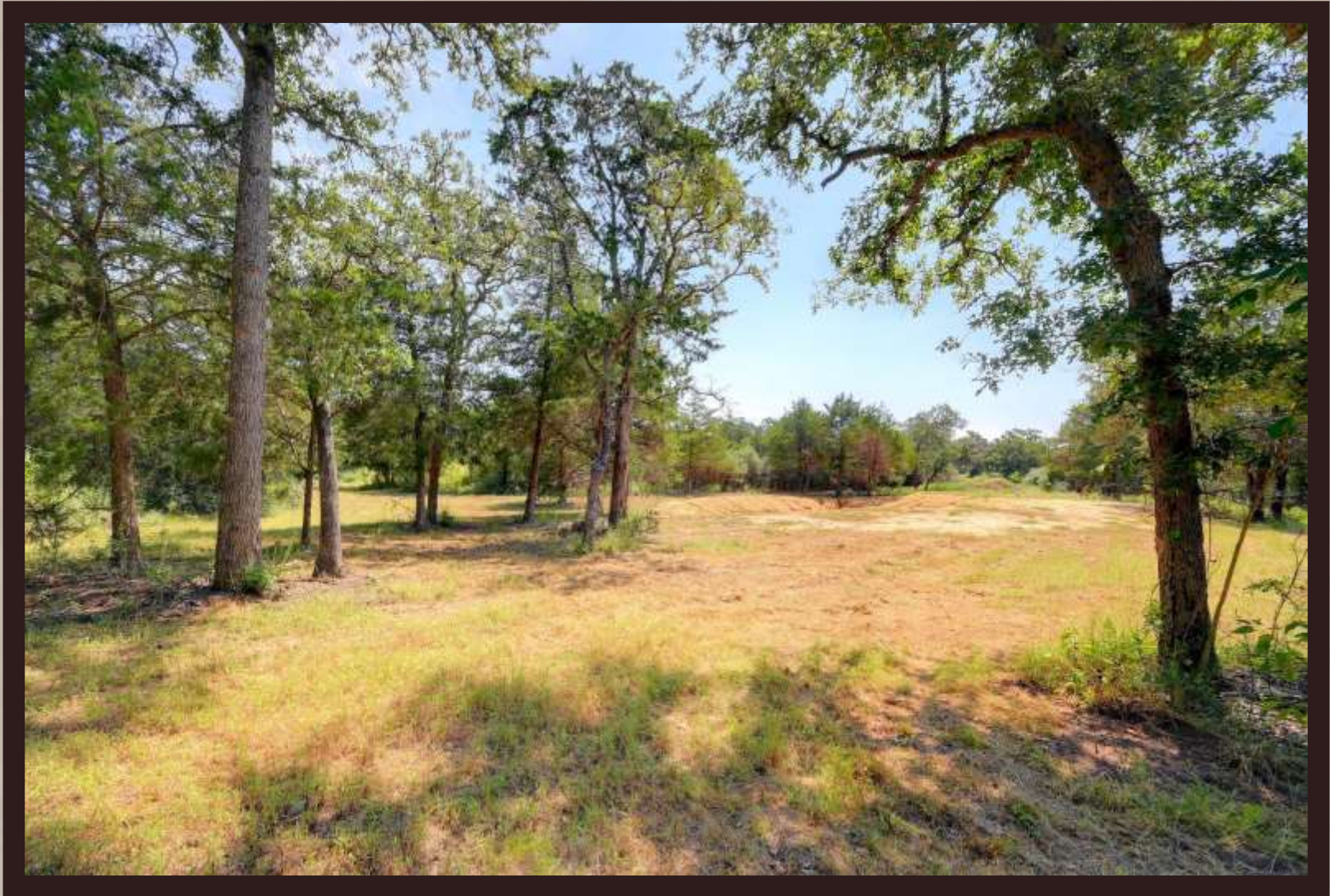






























































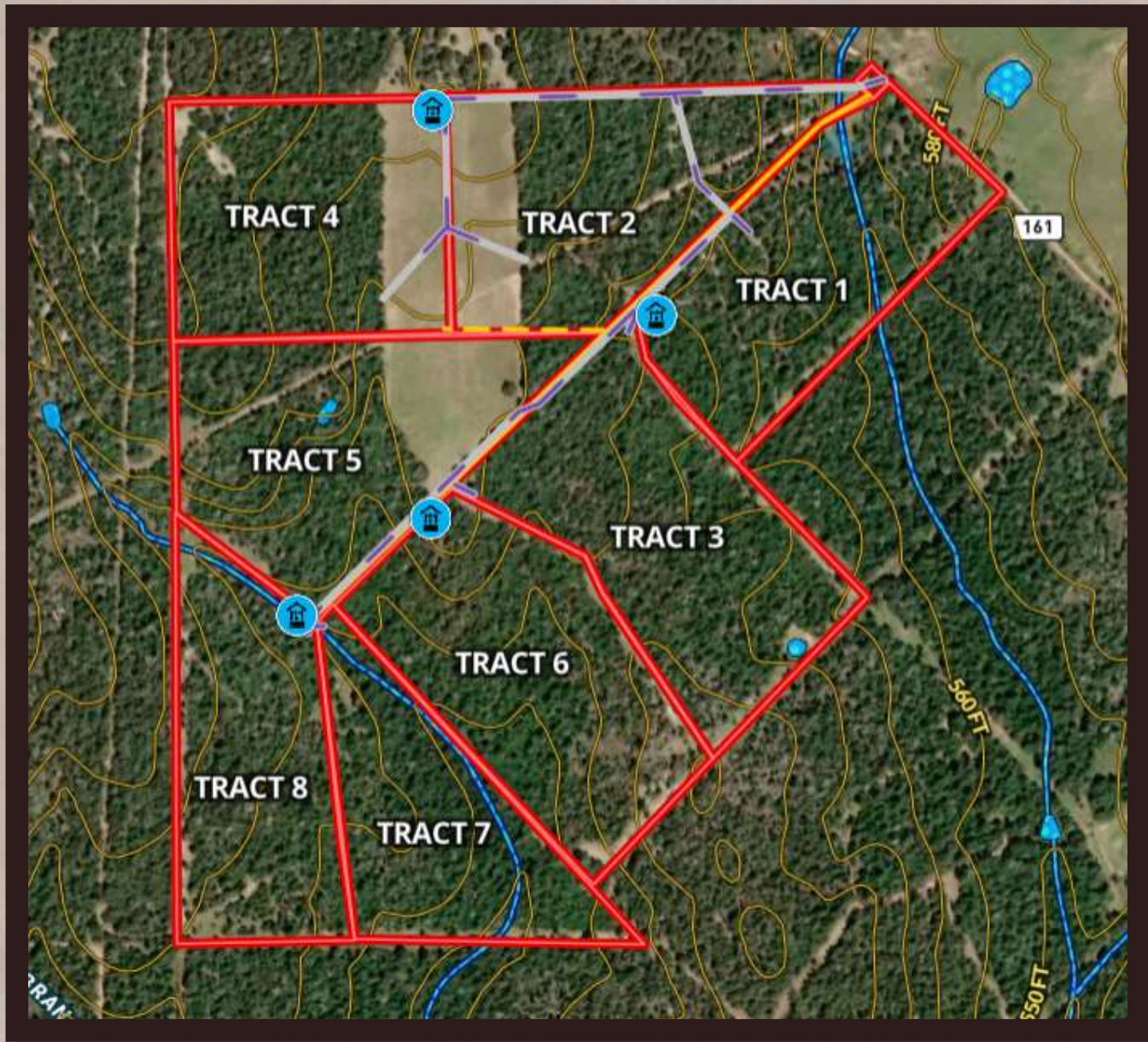












161

TRACT 4

TRACT 2

TRACT 1

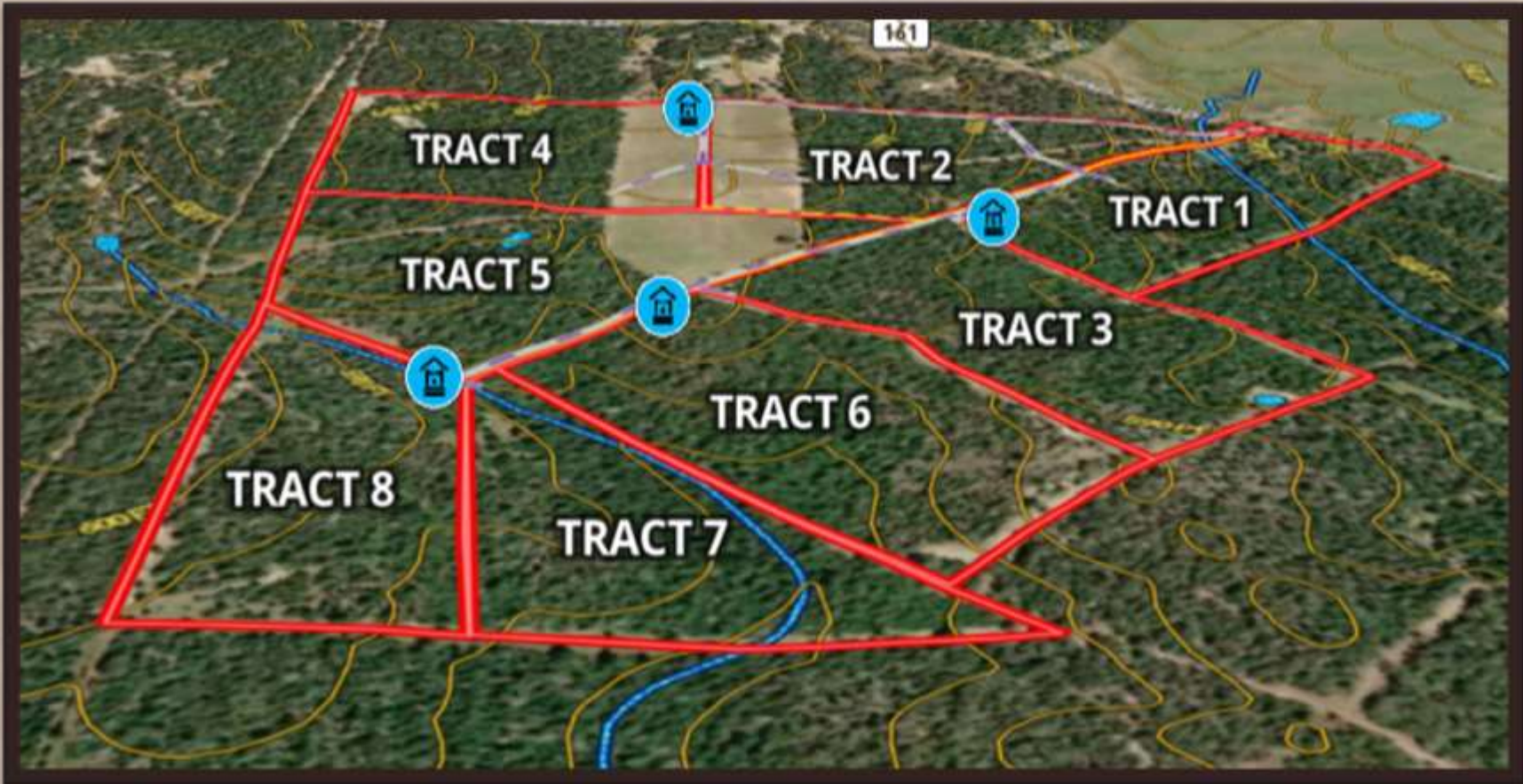
TRACT 5

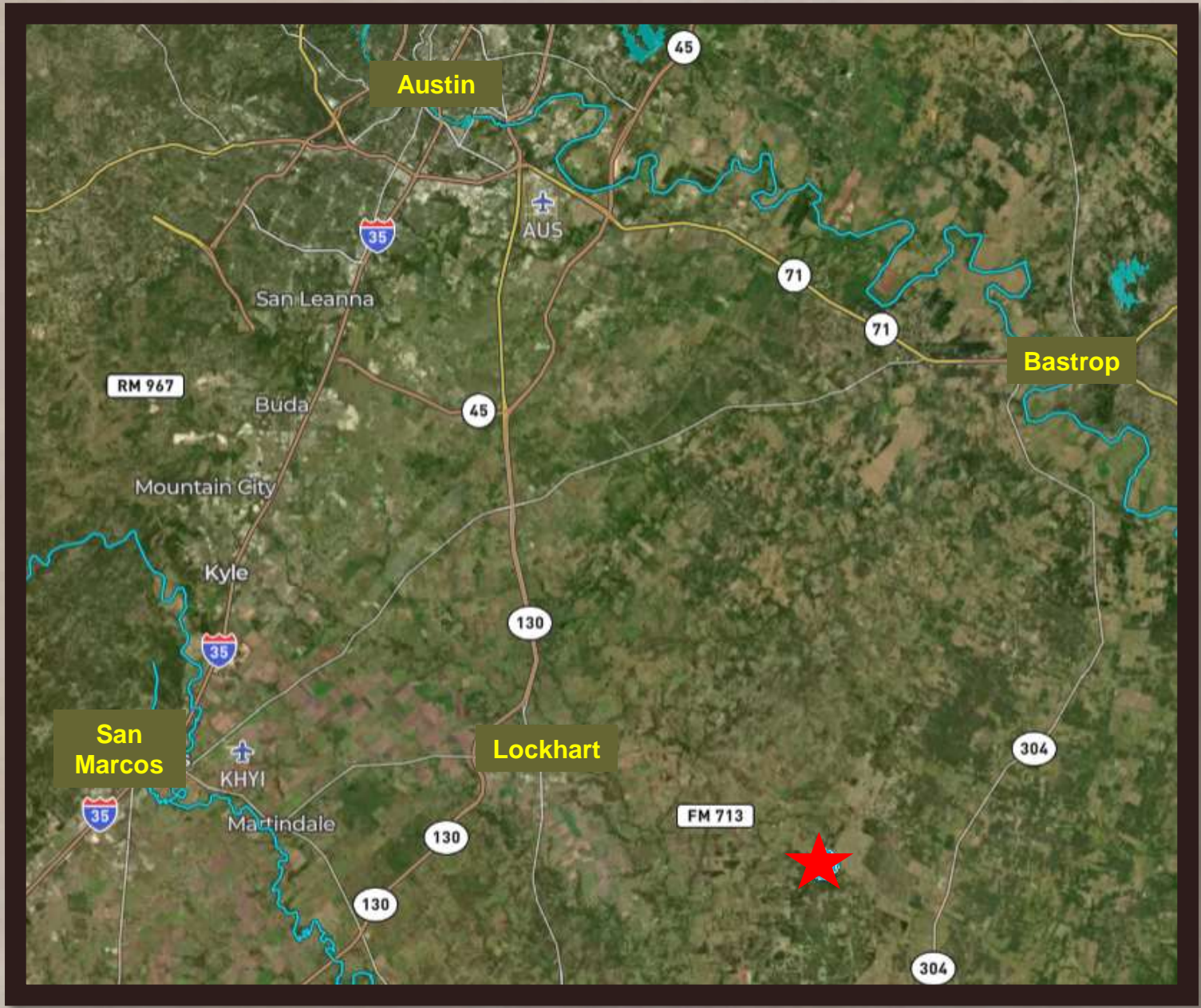
TRACT 3

TRACT 6

TRACT 8

TRACT 7





Austin

Bastrop

San Marcos

Lockhart

FM 713



THE RANCHES OF COLONY LINE TRAIL

PRIVATE & QUIET SETTING AT THE END OF A COUNTY ROAD. The Ranches of Colony Line Trail (CLT) is a rural ranch development with eight tracts of land ranging from 15 acres to 21 acres in size. One is greeted at the entry of the ranch by a new modern entry gate system that is designed to fit the surrounding native landscape and keep out anyone other than owners and their guests. Each property owner shares in the newly constructed private road that meanders through the ranch and leads to each tract. Each tract has private water well service and full electricity hookup ready to go. CLT has some open grassy areas, mature hardwood trees throughout, many watering holes for wildlife and a great setting for relaxation and enjoyment of the great outdoors. CLT would be favorable for horses, livestock, recreational and residential living.

Hurry fast to choose your favorite tract of land that offers nearly anything you may be looking for within your gentleman's ranch!

Fully ag exempt.

Click the following video link
to view the stunning ranchettes:

[The Ranches of Colony Line Trail Video](#)