

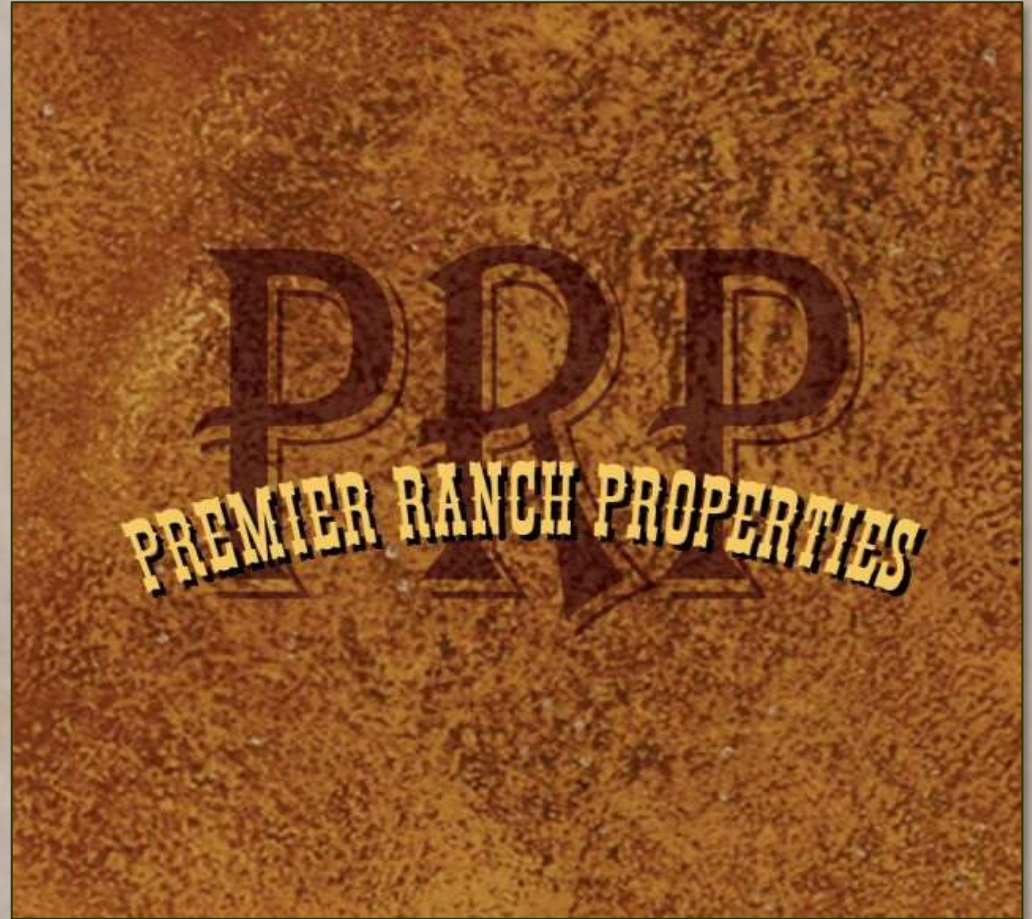
PremierRanchProperties.com  
South Texas • Hill Country • Central Texas

# Yegua Creek Ranch

Elgin, TX  
Williamson County

**58.49 ACRES**

*Call Chad Edwards (512) 350-3532  
with any questions or to set up a showing  
at your convenience.*



TEXAS RANCH SALES

# PROPERTY DESCRIPTION

- County Road 490 frontage has ~1400 feet of asphalt road.
- Over 20 feet of elevation change throughout the property.
- ~70% woodlands complete with Oaks, Elms, Pecans, Sycamores & more!
- ~30% open meadows with secluded & gorgeous building site locations.
- Yegua Creek frontage has over 2200 feet of wet weather creek with towering hardwoods.
- Natural pasture pond on site that provides ample water to the wildlife.
- Electricity available on site & water well and septic needed.

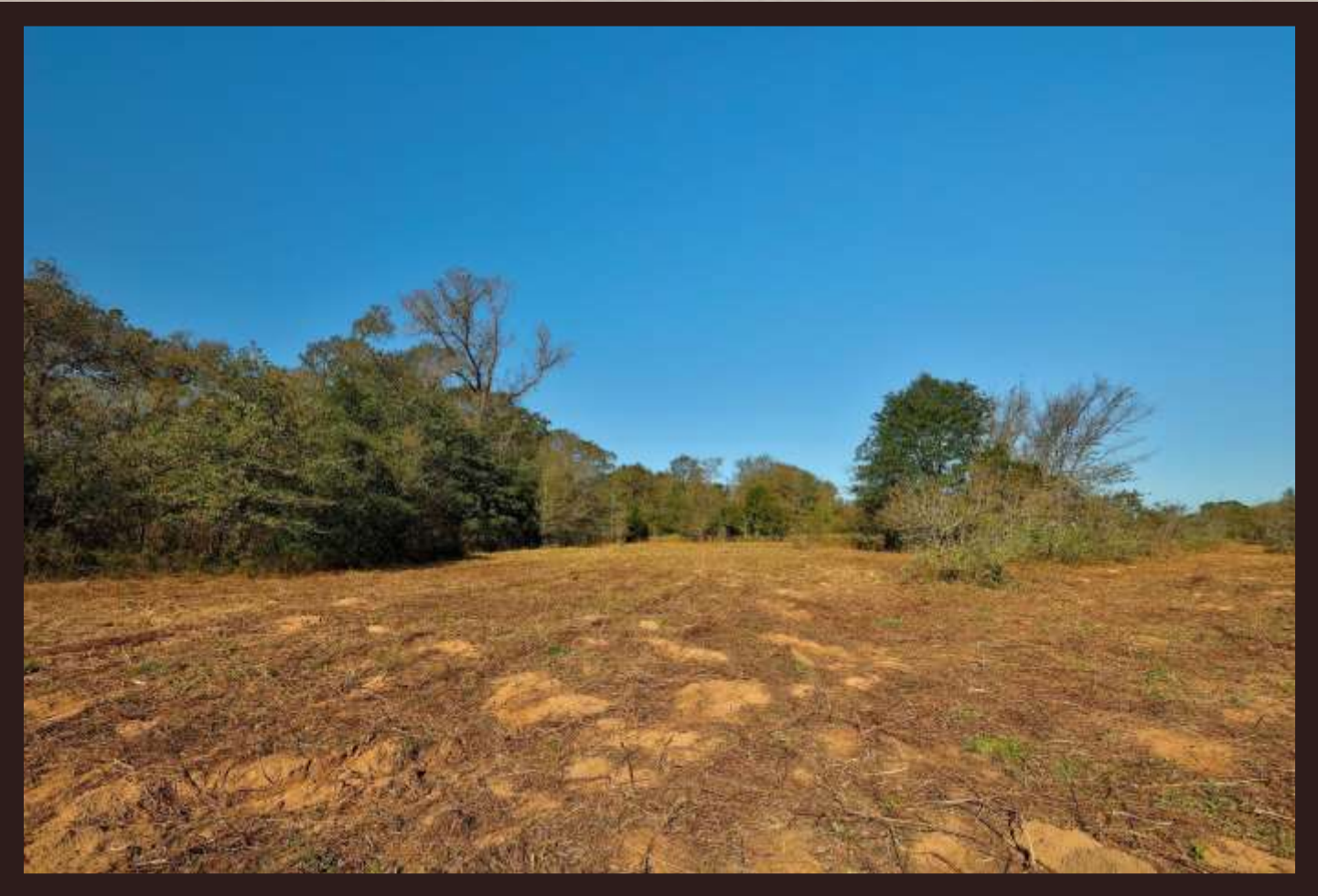




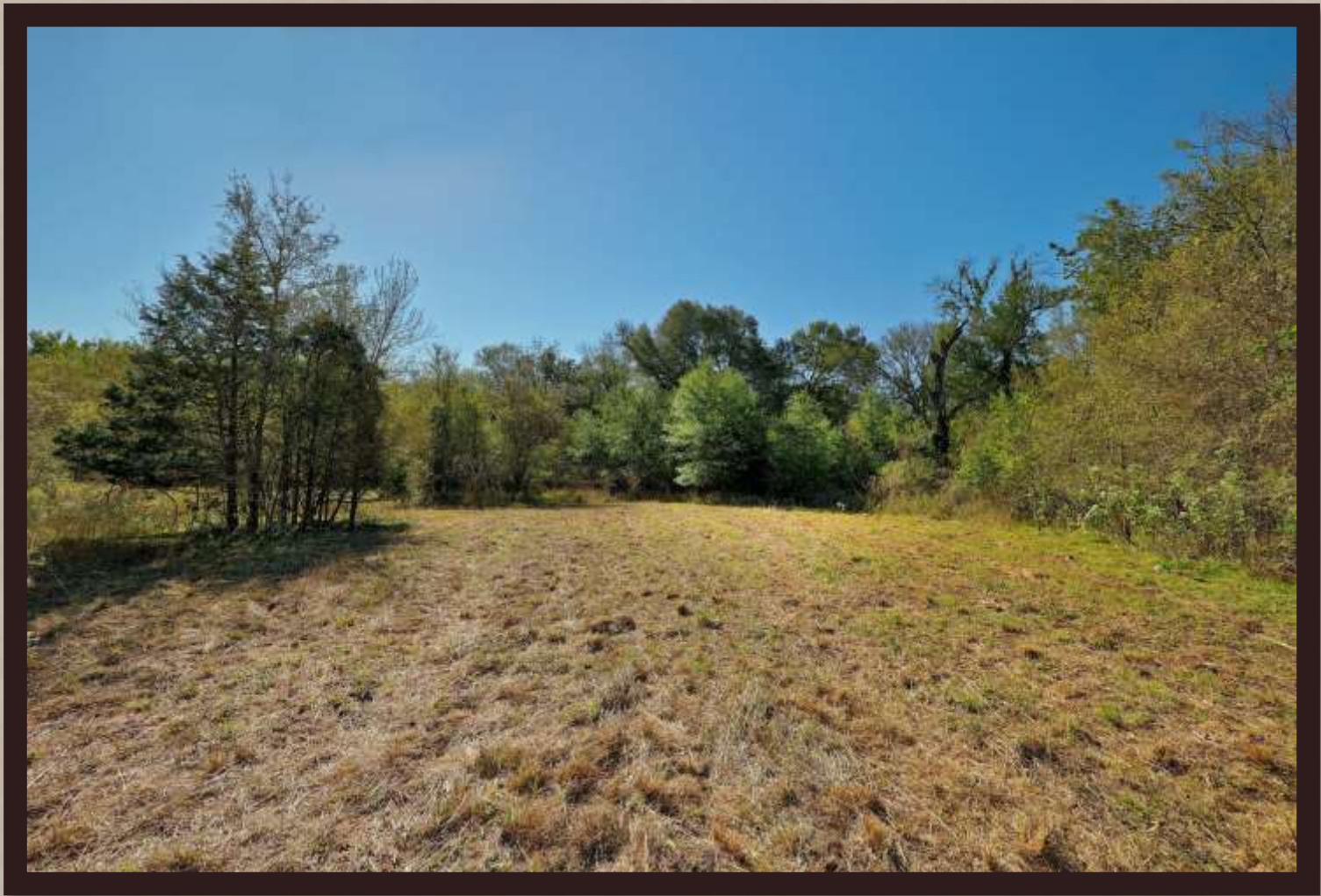




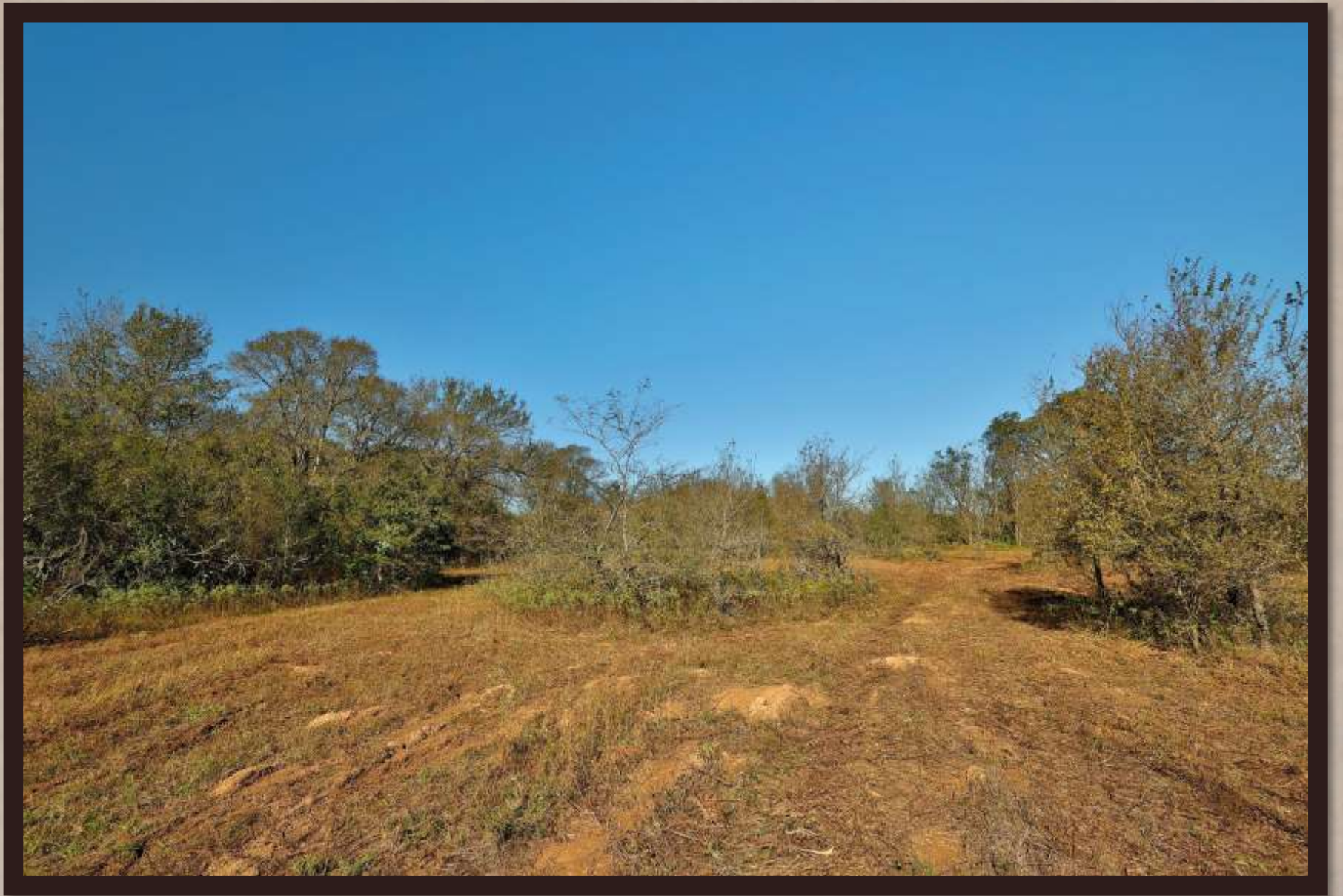










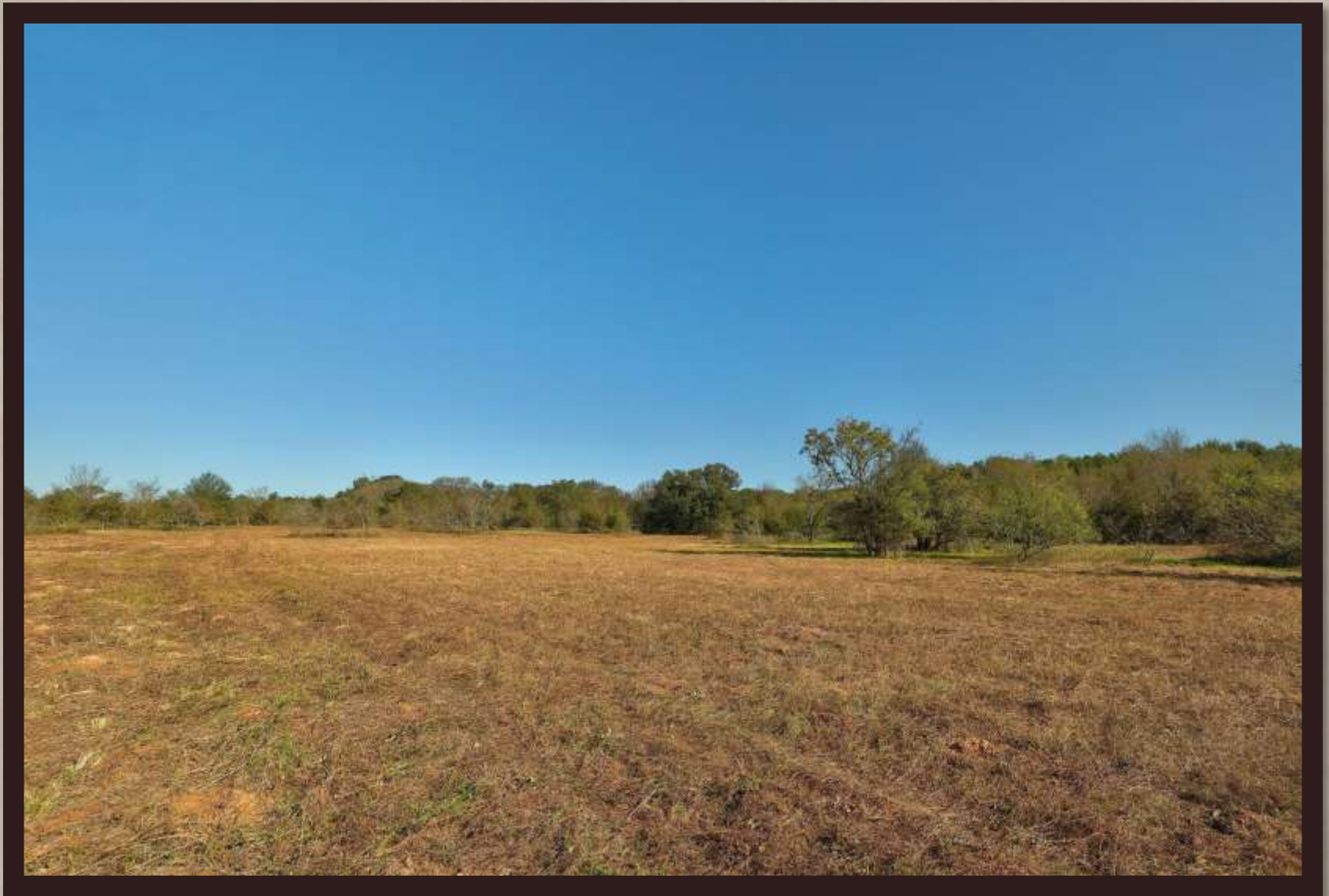










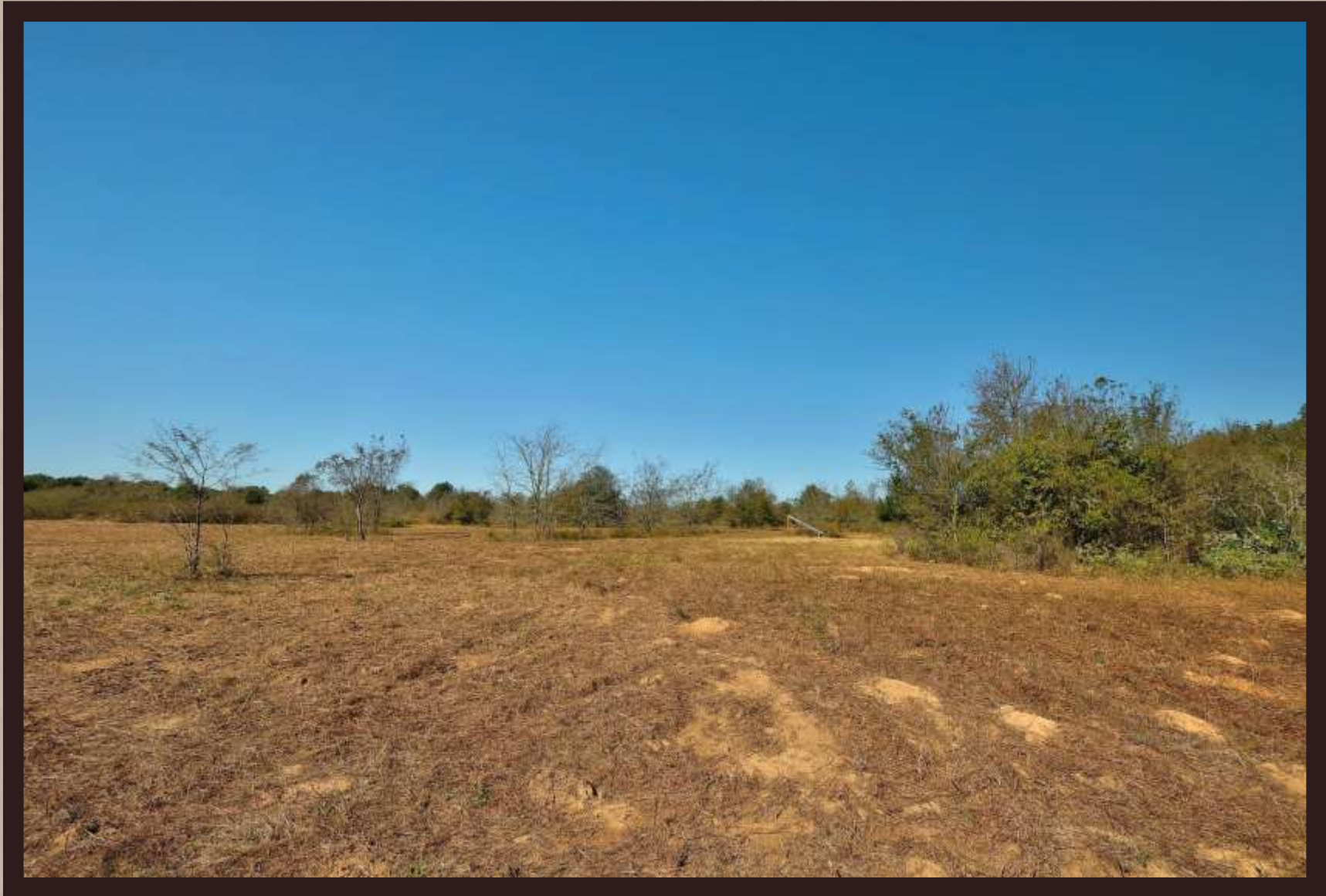


































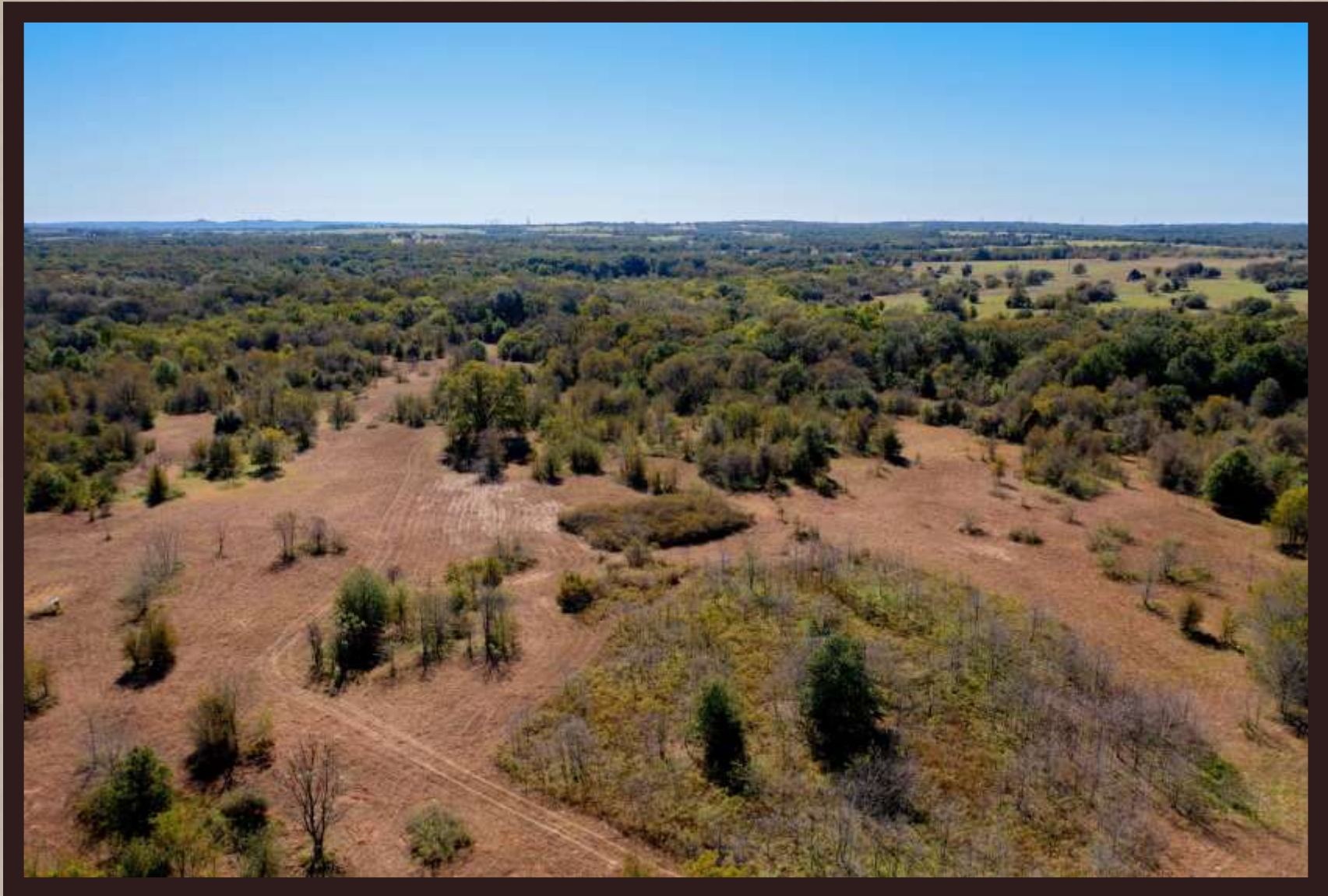










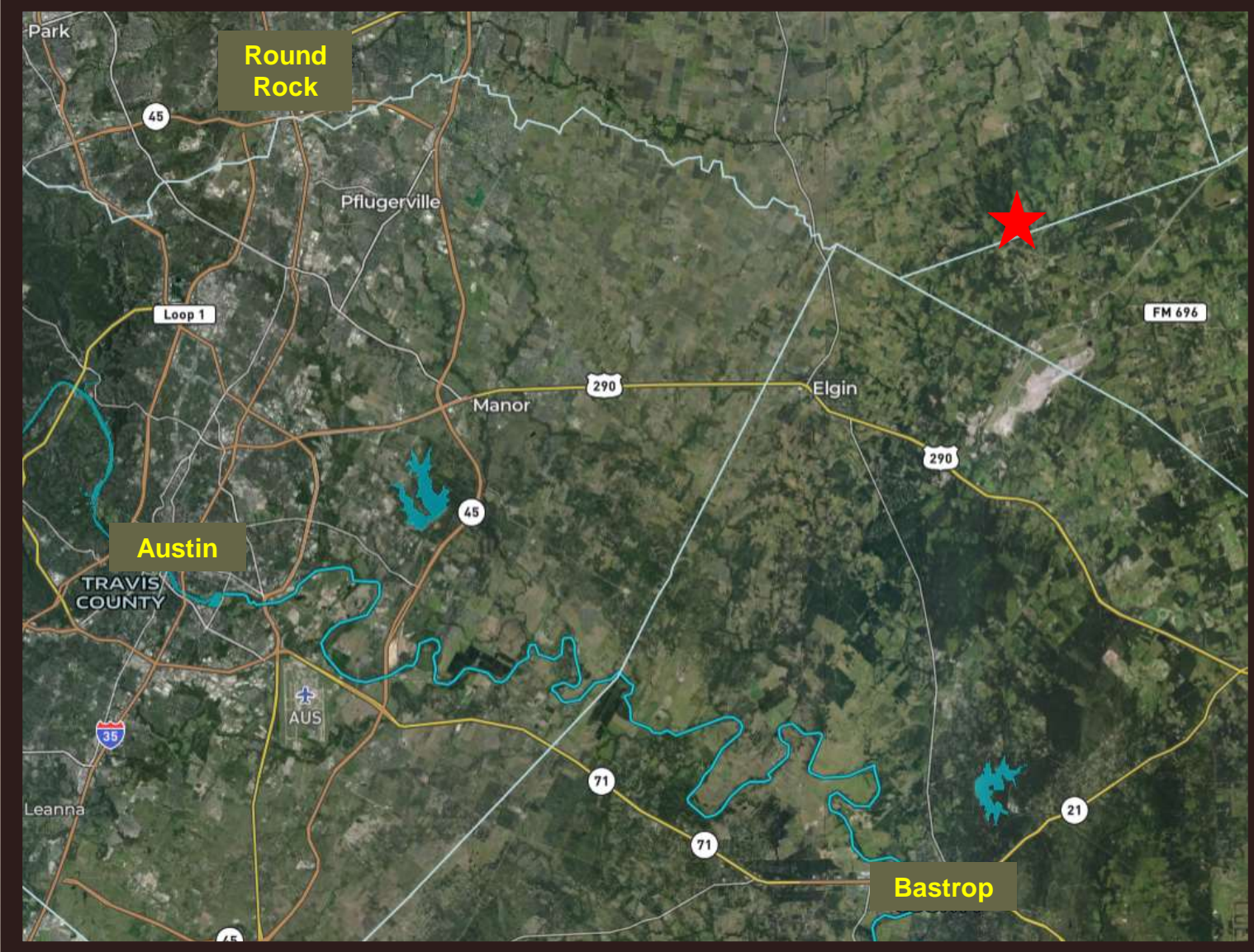












Round Rock

Austin

Bastrop





## YEGUA CREEK RANCH

A "just outside of town" type of setting approximately 15 minutes from Elgin, TX, 45 minutes from downtown Austin, TX & Austin Bergstrom International Airport. Right off an asphalt county road lies the Yegua Creek Ranch, with countless giant native hardwood trees. Too many different species of trees to list. Open grassy meadows meander through the native hardwoods and present a park-like setting throughout the property. A native pasture pond exists up front and makes for an attractive view on the way into the Yegua Creek Ranch. Over 2200 FT of Yegua Creek frontage and woodlands.

*Absolutely gorgeous landscape that presents a private country setting just outside of Austin, TX!*

Click the following video link  
to view the stunning ranch:

[Yegua Creek Ranch Video](#)